



Magellan® RoadMate™

Reference Manual



Instructions for Operating the Magellan RoadMate 2200T

IMPORTANT SAFETY WARNINGS

The Magellan RoadMate 2200T is a vehicle-navigation aid designed to assist you in arriving at your selected destinations. When using the Magellan RoadMate 2200T, these safety rules must be followed to prevent accidents that can result in injury or death to yourself or others:

- Some countries prohibit mounting any item to your windscreen. Please check the applicable regulations in your country as regards windscreen mounting. Go to www.magellanGPS.com for alternate mounting solutions. An adhesive disk is supplied with the Magellan RoadMate for use as an alternative mounting solution to the dashboard.
- When driving, the need to view the display is minimal. Voice prompts will guide you to your destination. The driver should enter data or programme the Magellan RoadMate 2200T only when the vehicle is stationary. Only a vehicle passenger should enter data or programme the Magellan RoadMate 2200T while the vehicle is moving.
- It is your responsibility to comply with all traffic laws.
- Every attempt is made to ensure that the database is accurate. However, roadways, points of interest (POIs), and business and service locations may change over time. The database does not include, analyse, process, consider, or reflect any of the following: legal restrictions (such as vehicular type, weight, height, width, load and speed restrictions); road slope or grade; bridge height, width, weight, or other limits; population density; neighbourhood quality or safety; availability or proximity of police, emergency rescue, medical, or other assistance; construction work zones or hazards; road or lane closures; road, traffic, or traffic facilities' safety or condition; weather conditions; pavement characteristics or conditions; special events; traffic congestion. It is your responsibility to disregard any unsafe, hazardous, or illegal route suggestions.
- Keep the Magellan RoadMate 2200T safe from extreme temperature conditions. For example, do not leave it exposed to direct sunlight for an extended period of time.
- Take care when mounting the Magellan RoadMate 2200T in your vehicle, whether using the windscreen mount or other mount or accessories, that it does not obstruct the driver's view of the road, interfere with the operation of the vehicle's safety devices such as air bags, or present a hazard to occupants of the vehicle should the Magellan RoadMate 2200T be dislodged while driving. You assume the risks associated with damage to your vehicle or vehicle occupants as the result of your choices in mounting the Magellan RoadMate 2200T.
- Laws in some countries prohibit wearing stereo headphones while operating a motor vehicle. Please check the applicable laws in the country you are driving.
- Proceed with caution when listening to music for prolonged periods of time through headphones, as this may lead to hearing loss.
- The battery in the Magellan RoadMate 2200T is rechargeable and should not be removed. In the event that it should need to be replaced, please contact Magellan Technical Support.

About Charging the Magellan RoadMate 2200T

- Only use the AC adapter (Phihong: PSC2200R-050) approved for your Magellan RoadMate 3000T. Use of another type of AC adapter can result in malfunction and/or possible fire hazard due to battery over heating.
- Only use the car charger approved for/supplied with your Magellan RoadMate 2200T. Use of another type of car charger will result in malfunctioning and/or may be hazardous.
- The Magellan RoadMate 2200T is intended to be supplied with a LISTED Power Unit marked with "LPS", "Limited Power Source" and output rated + 5 V dc / 2.0 A".
- Use the USB cable approved for/supplied with your Magellan RoadMate 2200T.
- For safety reasons, the battery in your Magellan RoadMate 2200T will stop charging when the ambient temperature is below 0°F (32°C) or above 45°F (113°C).

IMPORTANT SAFETY WARNINGS

About the AC Adapter

- Do not use the adapter in a high moisture environment. Never touch the adapter when your hands or feet are wet.
- Allow adequate ventilation around the adapter when using it to operate the device or charging the battery. Do not cover the AC adapter with paper or other objects that will reduce cooling. Do not use the AC adapter while it is inside a carrying case.
- Connect the adapter to a suitable power source. The voltage and grounding requirements are found on the product case and/or packaging.
- Do not use the adapter if the cord becomes damaged.
- Do not attempt to service the Magellan RoadMate 2200T. There are no serviceable parts inside. Replace the Magellan RoadMate 2200T if it is damaged or exposed to excess moisture.

About the Battery

- Do not attempt to replace the battery. Please contact Magellan Technical Support for issues related to the battery.
- Use the charger approved for your Magellan RoadMate 2200T.

IMPORTANT SAFETY WARNINGS

Federal Communication Commission Interference Statement

This equipment has been tested and found to comply with the limits for class B digital devices, pursuant to part 15 of the FCC Rules. These limits are designed to provide reasonable protection against harmful interference in a residential installation. This equipment generates, uses and can radiate radio frequency energy and, if not properly installed and used in accordance with the instructions, it may cause harmful interference to radio communications. However, there is no guarantee that interference will not occur in a particular installation. If this equipment does cause harmful interference to radio or television reception, which can be determined by turning the equipment off and on, the user is encouraged to try to correct the interference by taking one of the following steps:

- Reorient or relocate the receiving aerial.
- Increase the separation between the equipment and receiver.
- Connect the equipment into an outlet on a circuit different from that to which the receiver is connected.
- Consult the dealer or an experienced radio/TV technician for help.

This device complies with Part 15 of the FCC Rules. Operation is subject to the following two conditions: (1) This device may not cause harmful interference and (2) this device must accept any interference received, including interference that may cause undesired operation.

FCC Caution: Any changes or modifications not expressly approved by the party responsible for compliance could void the user's authority to operate this equipment.

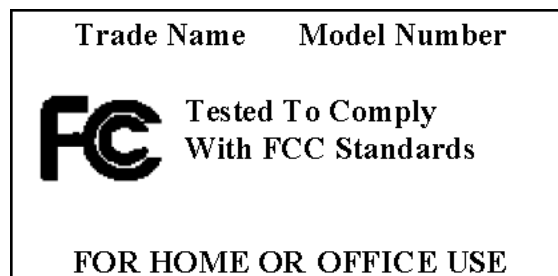
IMPORTANT NOTE:

FCC Radiation Exposure Statement:

This equipment complies with FCC radiation exposure limits established for an uncontrolled environment. End users must follow the specific operating instructions for satisfying RF exposure compliance.

This transmitter must not be placed next to or operated in conjunction with any other aerial or transmitter.

In order to maintain compliance with FCC regulations, shielded cables must be used with this equipment. Operation with non-approved equipment or unshielded cables is likely to result in interference to radio and TV reception. The user should note that any changes or modifications made to the equipment without the approval of the manufacturer could render the user's authority to operate this equipment inapplicable.



The Magellan RoadMate 2200T must be installed and operated at a distance of at least 20 cm (8 inches) from the user.

IMPORTANT SAFETY WARNINGS

IC statement

Operation is subject to the following two conditions:

1. This device may not cause interference and
2. This device must accept any interference, including interference that may cause undesired operation of the device.

IMPORTANT NOTE:

IC Radiation Exposure Statement:

This equipment complies with IC radiation exposure limits established for an uncontrolled environment. End users must follow the specific operating instructions for satisfying RF exposure compliance.

This transmitter must not be placed next to or operated in conjunction with any other aerial or transmitter.

© 2006 Magellan Navigation, Inc. All rights reserved. The Magellan Logo, Magellan, Magellan RoadMate 2200T, Turn it on and go, TrueView, QuickSpell, SmartDetour, and SmartVolume are trademarks of Thales. No part of this user manual may be reproduced or transmitted in any form or by any means, electronic or mechanical, including photocopying and recording, for any purpose other than the purchaser's personal use, without the prior written permission of Magellan Navigation, Inc.

631401-18 A

Magellan RoadMate 2200T	1
What the Magellan RoadMate can do for you... ..	1
Magellan RoadMate Reference Manual	1
Magellan RoadMate 2200T	2
Magellan RoadMate 2200T Right Side View	3
Magellan RoadMate 2200T Left Side View	3
 Magellan RoadMate 2200T Screens	 4
Map Screen	4
Main Menu Screens	5
Main Menu - Active Route	5
Main Menu - No Active Route	7
Locate Screen	8
List of Directions.....	8
Application Menu Screen	9
 Creating Routes	 10
Overview	10
Creating a route to a street address	10
Creating a route using POIs	11
Creating a route to a POI by name	11
Creating a route to a nearest POI	12
Creating a route to a POI near an upcoming motorway exit	12
Creating a route to go home	13
Setting the home address	13
Changing the home address	14
Create a route to the home address	14
Using the address book	14
Creating a route to a previous destination	14
Adding a previous destination to your address book	15
Creating a route to a favourite destination	15
Creating a route to an address in the address book	15
Editing an address in the address book	16
Deleting an address from the address book	16
Creating a new address	17
Creating a route to a Junction	17
 Using the Trip Planner	 19
Overview	19
Creating a multiple destination trip	19
Activating a multiple destination trip	19
Editing a multiple destination trip	20
Deleting a multiple destination trip	21
Renaming a multiple destination trip	21

Magellan RoadMate Enhanced POIs	22
Overview	22
Speed Camera POIs	22
Accessing the Enhanced POI Menu	22
Loading an Enhanced POI file	22
Displaying/Selecting Categories	22
Setting Alarms	23
Setting Alert Parameters	23
Creating a Route Using Enhanced POIs	23
Saving a POI to your Address Book from Enhanced POIs	23
 System Settings	 25
Overview	25
Volume	25
Brightness	25
Power	25
Language	25
Time Zone	25
Unit of Measurement	26
Page 2	26
Product Information	26
Diagnostics	26
Additional Items	26
Battery Life	26
Contact Us	26
 Setting User Options	 27
Overview	27
POI Selection	27
Address Book Options	27
Map Options	27
Map Colour	28
Route Preferences	28
Detour Options	28
Simulator Mode	29
Menu Colours	29
Tone Options	29
GPS Options	29
Backup and Restore	29
 Magellan RoadMate PC Tools Installation	 30
Installing the Software	30

Magellan RoadMate POI Manager	31
Latitude	31
Longitude	31
Altitude	32
Opening a POI File	32
Creating a New POI File	33
Adding Individual POIs	33
Importing a Data File	35
 Magellan RoadMate Music Manager	 36
 Magellan RoadMate Photo Manager	 37
 Music Player	 38
Single Song Play	38
Multiple Song Play	39
Play	39
Create	39
Modify	39
Delete	40
Rename	40
Play Mode	40
List Songs	40
Equaliser	41
Help	41
 Photo Viewer	 42
View Single Photo	42
Previous Image (left arrow)	42
Zoom	43
Slideshow	43
Pan	43
Rotate Image	43
Next Image (right arrow)	43
ESC	43
Manage Photos	44
List View	44
Thumbnail	44
Rename	44
Properties	44
Tools	44
Preferences	44
Delete Files	44
About	44

Magellan RoadMate 2200T

Thank you for purchasing the Magellan RoadMate 2200T. The Magellan RoadMate 2200T will be your perfect driving companion for all your trips, from a trip to the grocery store or a week's holiday.

What the Magellan RoadMate can do for you...

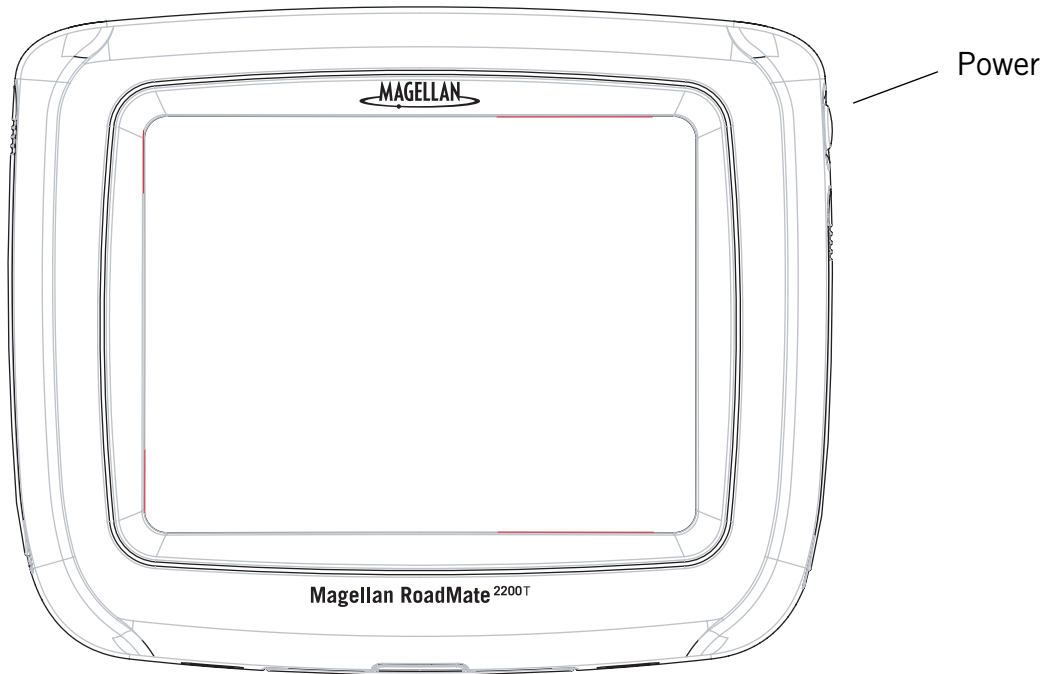
- Provide turn-by-turn driving instructions to any address in the selected country.
- Contains an address book that you can save addresses to that you often need to route to. You can even mark an address as a favourite to make it easier to find.
- Comes preloaded with an extensive, easily accessible points of interest (POI) database that can be used to quickly find a restaurant, petrol station, bank or other popular destinations.
- The Magellan RoadMate includes a SmartDetour™ tool that will automatically ask you if you want to detour around unrelenting traffic jams.
- Provides alerts to notify you of approaching speed traps.
- Includes a trip planner that provides you with the ability to create a trip with multiple destinations.
- A trip computer that provides a record of your trip that can be saved.
- You can even route to an intersection when you are unsure of the exact address but you are familiar with the junctions.
- Small and portable, the Magellan RoadMate fits into your pocket and is ready to go with you anywhere.

The interface of the Magellan RoadMate is smart and easy-to-use. Every feature is just a tap away with the Magellan RoadMate touchscreen.

Magellan RoadMate Reference Manual

It is not necessary to read this entire document to begin using the Magellan RoadMate. Most users will find that they can use the Magellan RoadMate straight out of the box and just refer to this manual on those rare occasions when a little help on a feature is required.

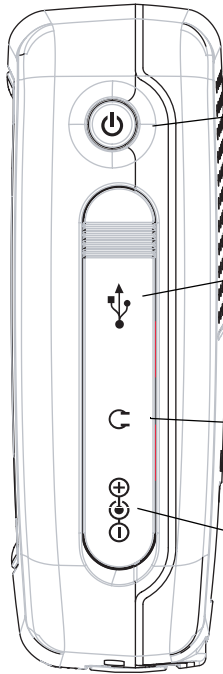
Magellan RoadMate 2200T



The Magellan RoadMate 2200T uses a touchscreen display for all user inputs. The only readily accessible button that is normally used is the power button located on the right side of the unit. To prevent the unit from switching on accidentally, you need to press and hold the power button down for a few seconds to turn the Magellan RoadMate on. [Note: The reset button must be on (in the up 'I' position) before the Magellan RoadMate can be turned on.]

All connections to the Magellan RoadMate are located on the left and right sides of the unit, protected by a rubber covering to keep out moisture. When you need to access the connectors, simply lift the protective cover from the bottom.

Magellan RoadMate 2200T Right Side View



Power - Press and hold to turn the Magellan RoadMate on or off. (Note: The reset switch MUST be in the up 'I' position).

USB Connection - (under protective cover) Used for connecting to a personal computer to upgrade the firmware or to upload music files, photos and custom POIs.

Headphone Connector - (under protective cover) Please check local laws for use of headphones while driving.

External Power Input - (under protective cover) Connects power to the Magellan RoadMate from a cigarette lighter adapter or an approved AC adapter.

Magellan RoadMate 2200T Left Side View



SD Card Slot - (under protective cover) Contains an SD card with a detailed map for your country and any files you may have transferred from a PC. Additional SD cards with maps from other regions are available from www.magellanGPS.com

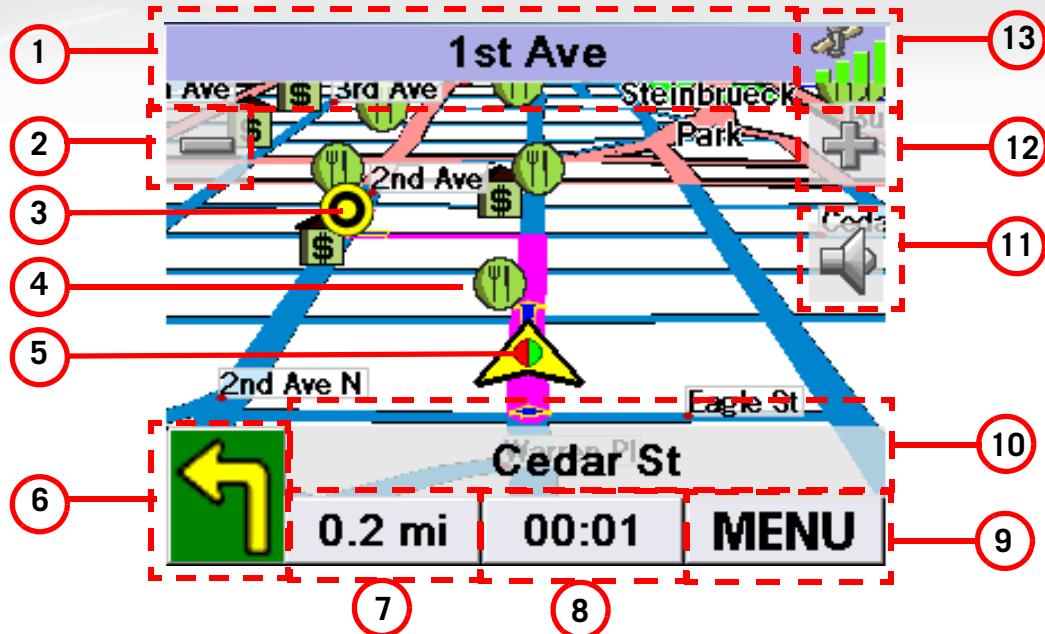
Reset - (under protective cover) You may be required to reset the unit should the Magellan RoadMate cease functioning or during firmware updates. (The Magellan RoadMate will operate only if the reset switch is in the up 'I' position).

Hold Button - (under protective cover) Used to turn off the touchscreen portion of the display and sets the receiver into a power saving mode. Primarily used for outdoor use where the Magellan RoadMate might be in a pocket or backpack.

Magellan RoadMate 2200T Screens

Map Screen

The Map Screen is the most commonly used screen on the Magellan RoadMate. Whether you are getting directions or just driving around town, the Map screen will give you the peace of mind of knowing where you are.



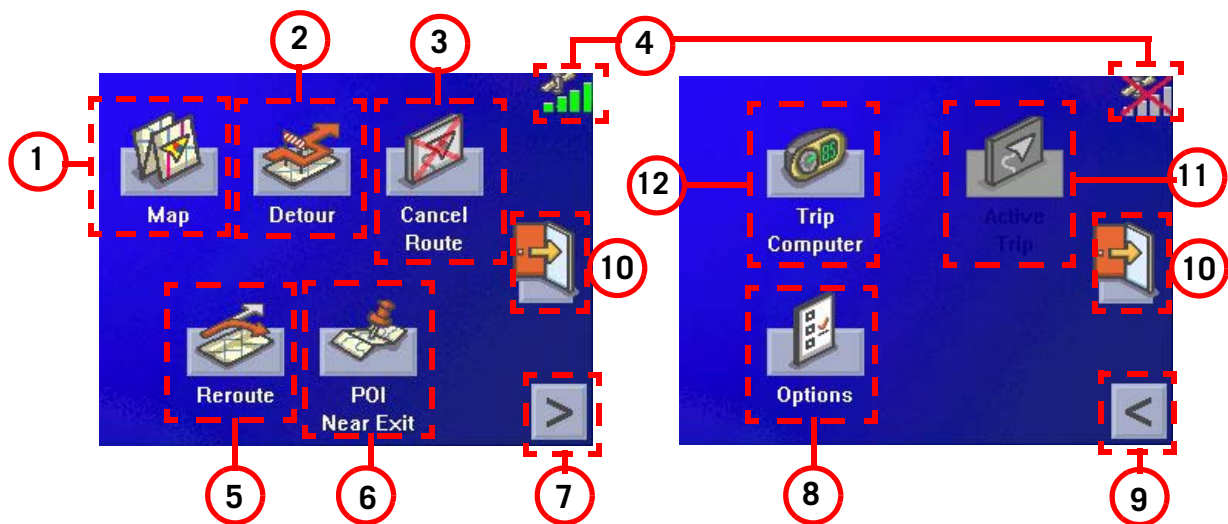
1	Current Street Name	Name of street you are currently on.	When selected, displays the Locate screen
2	Zoom out		When selected, zooms out the map display.
3	Destination Icon	Provides a visual indication of your destination.	
4	POI Icon	The sample indicated is the icon for a restaurant.	When selected, it offers you the option of setting a trip to that POI.
5	Location Icon	Provides visual indication of your current position.	When selected, displays that you are heading in a N, NE, NW, or W direction.
6	Next Manoeuvre	Indicates what type of manoeuvre you will need to perform when directed.	When selected, repeats the last verbal instruction.
7	Distance to Next Manoeuvre	Displays the computed distance to your next manoeuvre in the chosen unit of measurement.	When selected, displays the total remaining distance of the trip.

8	Time to Next Manoeuvre	Displays the computed time to your next manoeuvre.	
9	Menu Button		When selected, brings up the main menu.
10	Next Manoeuvre Street Name	Displays the name of the street that the next manoeuvre will occur.	When selected, displays the manoeuvre list screen.
11	Mute		When selected, mutes the volume.
12	Zoom In		When selected, zooms in the map display.
13	Satellite Status	Displays a bar graph indicating satellite signal strength.	When selected displays the Satellite Status screen.

Main Menu Screens

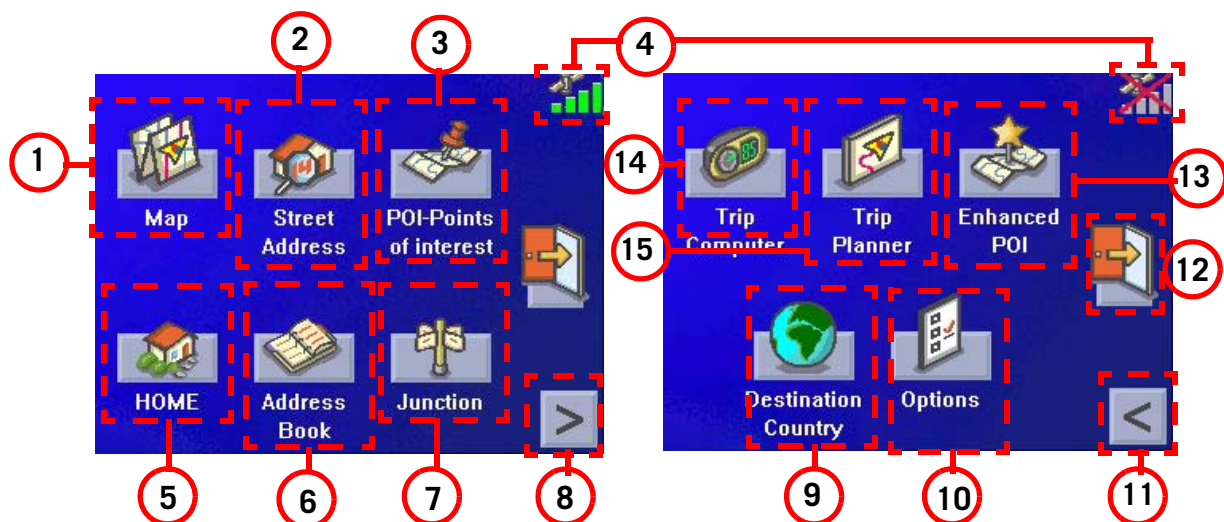
The Main Menu has two modes: active route and normal. When a route is active the Main Menu provides functions that pertain to the route. With no active route, the Main Menu provides access to functions that are used to create a route.

Main Menu - Active Route



①	Map Button	Used to access the Map Screen	
②	Detour Button	Detour gives you the option of re-routing the trip around traffic problems ahead of you.	
③	Cancel Route Button	Cancels the route you are travelling on.	
④	Satellite Status	Displays a bar graph indicating satellite signal strength.	When selected displays the Satellite Status screen.
⑤	Re-route Button.	Provides a way to re-calculate the route you are on. Useful when you have veered off the route and need it to be re-calculated.	The Magellan RoadMate performs automatic re-routing. This button can be used to speed up the re-routing process.
⑥	POI Near Exit Button	This function provides you with access to a listing of common POI categories that are near upcoming motorway exits. (can only be used while travelling on a motorway.)	
⑦	Menu Page 2	Accesses the second page of the route main menu.	
⑧	Options Button	Accesses the options menu.	
⑨	Menu Page 1	Accesses the first page of the route main menu.	
⑩	Application Menu	Accesses the Application Menu for additional applications and system settings.	
⑪	Active Trip Button	Functional only when travelling on a multideestination trip. Provides access to tools to modify the trip you are on.	
⑫	Trip Computer	Accesses the trip computer feature providing information about the trip that can be saved.	

Main Menu - No Active Route



1	Map Button	Used to access the Map Screen	
2	Street Address Button	Create a trip using a street address as the destination.	
3	POI-Points of Interest Button	Create a trip using a point of interest from the POI database as the destination.	
4	Satellite Status	Displays a bar graph indicating satellite signal strength.	When selected displays the Satellite Status screen.
5	Home Button	Save your home address in the Magellan RoadMate 2200T and easily create a trip with your home as the destination.	
6	Address Book Button	Access addresses saved to the address book. Can also be used to re-route to a previous destination.	
7	Junction Button	Create a route to a junction.	
8	Menu Page 2	Accesses the second page of the route main menu.	
9	Destination country button	Used to access country detailed maps loaded in the Magellan RoadMate.	Always make sure the appropriate country is first selected when you search for an address or a POI.
10	Options Button	Accesses the options menu.	
11	Menu Page 1	Accesses the first page of the route main menu.	

12	Application Menu	Accesses the Application Menu for additional applications and system settings.	
13	Enhanced POIs	Used to access personal POIs created with the PC Tools or speed trap POIs found on your region SD card.	
14	Trip Planner	Used to create a multideestination trip that can be routed to or saved.	
15	Trip Computer	Accesses the trip computer feature providing information about previous trips that can be saved.	

Locate Screen (Select the top bar on the Map screen)

The Current Location screen displays information about your present position and provides a way to save your present position in your address book.

The left side of the screen indicates your heading, an address for your present position (if able to calculate), the next and previous street, as well as the latitude/longitude of your present position.

The right side of the screen shows a compass, the elevation (if able to compute) and the speed you are travelling.

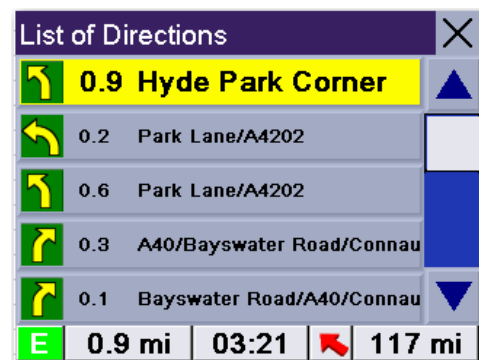


Use the **Save** button to store your current position into your address book. Select "X" in the upper right corner to return to the Map screen.

List of Directions (Select the next manoeuvre bar on the Map screen)

The List of Directions screen displays all of the manoeuvres remaining before reaching your destination.

Select one of the manoeuvres in the list to exclude that manoeuvre from the route. The manoeuvre will be excluded and the route recalculated.

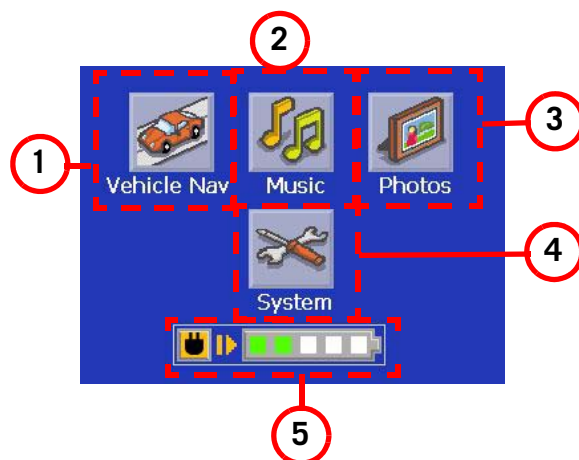



The bottom of the screen displays the heading, distance to next manoeuvre, time to next manoeuvre and distance for the entire route.


Select "X" in the upper right corner to return to the Map screen.

Application Menu Screen

From the Application Menu you can select additional applications for your Magellan RoadMate. Preloaded into the Magellan RoadMate is an MP3 player and an image viewer. Additionally, information about your battery life and changing your system settings can be found on the Application Menu.



To access the Application screen, select the  button on the Main Menu screen.

1	Vehicle Nav Button	Used to access the vehicle navigation application.	When selected displays the Navigation Main Menu.
2	Music button	Used to access the internal MP3 player	When selected displays the MP3 player.
3	Photos button	Used to access internal image viewer application	When selected displays the image viewer file selection page
4	System button	Used to access system settings for your Magellan RoadMate.	When selected displays the System Settings Main Menu.
5	Battery Status	Displays a slider bar indicating the battery life available. (All green indicates a fully charged battery.)  indicates that the Magellan RoadMate is connected to external power (optional AC adapter or +12vdc from the cigarette lighter adapter) and the battery is being charged.	

Creating Routes

Overview

Creating a route involves selecting a destination and choosing how you would like the route calculated. Once this is done, the Magellan RoadMate will calculate the route using the guidelines you provide and displays the Map screen with information guiding you to your destination.

Detailed map routing: The Magellan RoadMate can only provide routing information for detailed maps that are loaded on the SD Card. The detailed maps loaded on your SD Card can cover one or several countries. It is not possible to be guided from and to an address that doesn't belong to the detailed maps that are loaded on your SD Card.

When your SD card is loaded with detailed maps for several countries, you must make sure that the appropriate Country of Destination has been selected before you start searching for an address or a POI.

Creating a route to a street address

1. From the Main Menu, select **Street Address**.
2. Select **Search By Town**, **Search by Postcode** or **Previous Towns**.
3. Input the information as requested depending upon your selection in step 2.

If using Search By Town: Spell the town name and select the town from the list, spell the name of the street and select from the available street list, then enter the address number for the street. (If the address you want to enter does not fall within the acceptable range displayed, enter the closest possible address.)

If using Search by Postcode: Enter the post code for the address and select the town from the list of matching areas. Spell the name of the street and select from the available street list, then enter the address number for the street (it must fall within the street number range displayed at the top of the screen).



Using the keyboard to enter information. The keyboard will display only those letters that spell an item in the database. This provides a quick and easy tool to enter town and street information.

Use the "123" button to enter numbers and the "& ? / -" button to access symbols.

If using Previous Towns: Select a town from the list of previously used towns. Spell the name of the street and select from the available street list, then enter the address number for the street (it must fall within the street number range displayed at the top of the screen).

4. Select the method to be used to calculate the route.

NOTE: All the street names are indexed using the main significant words in their names (i.e. not the prefixes or articles). However, there are some exceptions where you may encounter problems trying to find a street by typing only the significant word in its name. If this is the case, try typing the prefix or article of the street name first.

Creating a route using POIs

POIs (points of interest) have been preloaded into the Magellan RoadMate for commonly used categories such as hotels, restaurants, petrol stations, etc. Following the steps provided you will be able to create a route to any of these destinations.

Creating a route to a POI by name

1. From the Main Menu, select **POI-Points of Interest**.

2. Select the category of the POI and, if displayed, the subcategory.

3. Select **Spell Name**.

4. Spell out the POI name. You do not need to spell out the complete name. However, the more letters you enter, the narrower the search will be.

5. Select **Current Position, Address or Town Centre**.



Scroll down the list of available categories to select the one you are looking for. Select 'Other' for additional categories.

The most common will be **Current Position** or **Town Centre**. In this case you could be looking for any particular brand of petrol station nearest to where you are or possibly nearest to the centre of a town you are planning on going to.

If you select Town centre or address, you will need to input the name and select from the list of available items before continuing.

6. Select the POI from the list of POIs that you are looking for.

7. Once the POI has been selected from the available list, select the routing method you want to use and the Magellan RoadMate will begin calculating the route.

Creating a route to a nearest POI

1. From the Main Menu, select **POI-Points of Interest**.
2. Select the category of POI and, if displayed, the subcategory.
3. Select **Near**.
4. Select **Current Position, Address** or **Town Centre**.

The most common will be **Current Position**. In this case you could be looking for the nearest petrol station to your current position.

5. A list of POIs for the selected category and nearest to the criteria you chose in step 4 will be presented. Select the POI you wish to go to.
6. Once the POI has been selected from the available list, select the routing method you want to use and the Magellan RoadMate will begin calculating the route.



This is a sample list of POIs that meet the set criteria. The address and phone number is displayed to help you select the right POI. The red arrow indicates the approximate direction of the POI from your current position.

Creating a route to a POI near an upcoming motorway exit

This feature only works if you are travelling on a motorway. If you try to access it while not on a motorway, an alert is displayed indicating that it is not available.

1. From the Main Menu, select **POI-Points of Interest**.
2. Select **POI Near the Exit** at the top of the list. Note that this is available if you are currently travelling on a motorway.
3. Select the exit for which you would like to display the POI to view all four of the categories for this exit or select a category icon to view the POIs for that category only for this exit.
4. Select a POI from the list of available POIs.

5. Once the POI has been selected, select the routing method you want to use and the Magellan RoadMate will begin calculating the route.

This function is available whether a route is active or whether you are travelling without a selected destination. Please note that if you are travelling with an active destination selecting a POI this way will cancel the route and create a new one. You will then need to redo the route, using Previous Destinations in the address book, to complete the original route.

Note: when a route is active a **POI near Exit** button is also available from the Main menu.

Creating a route to go home

Setting the home address

1. From the Main Menu, press on **Home**.
2. If you have not entered a home address previously, select **Yes** to enter your home address.
3. Select **Search By Town**, **Search by Postcode** or **Previous Towns**.
4. Input the information as requested depending upon your selection in step 3.

If using Search By Town: Spell the town name and select the town from the list, spell the name of the street and select from the available street list, then enter the address number for the street (it must fall within the street number range displayed at the top of the screen).

If using Search by Postcode: Enter the post code for the address and select the town from the list of available towns. Spell the name of the street and select from the available street list, then enter the address number for the street (it must fall within the street number range displayed at the top of the screen).

If using Previous Towns: Select a town from the list of previously used towns. Spell the name of the street and select from the available street list, then enter the address number for the street (it must fall within the street number range displayed at the top of the screen).

5. Select **Save** to store the home address.

Changing the home address

1. From the Main Menu, press on **Home**.
2. Select **Change** to change your home address.
3. Confirm the change by selecting **Yes**.
4. Select **Search By Town**, **Search by Postcode** or **Previous Towns**.
5. Input the information as requested depending upon your selection in step 4.

If using Search By Town: Spell the town name and select the town from the list, spell the name of the street and select from the available street list, then enter the address number for the street (it must fall within the street number range displayed at the top of the screen).

If using Search by Postcode: Enter the post code for the address and select the town from the list of available towns. Spell the name of the street and select from the available street list, then enter the address number for the street (it must fall within the street number range displayed at the top of the screen).

If using Previous Towns: Select a town from the list of previously used towns. Spell the name of the street and select from the available street list, then enter the address number for the street (it must fall within the street number range displayed at the top of the screen).

6. Select **Save** to store the home address.

Create a route to the home address

1. From the Main Menu, press on **Home**.
2. Select **Route**.
3. Select the routing method you want to use and the Magellan RoadMate will begin calculating the route home.

Using the address book

Creating a route to a previous destination

1. From the Main Menu, press on **Address Book**.
2. Select **Previous Destinations**.
3. Select the desired destination from the list of previous destinations.

4. Select **Route**.
5. Select the desired Route Method.

Adding a previous destination to your address book

1. From the Main Menu, press on **Address Book**.
2. Select **Previous Destinations**.
3. Select the desired destination from the list of previous destinations.
4. Select **Edit**.
5. (Optional) Edit the name of the address by selecting the top line of the address.
6. (Optional) Select the Favourite check box to add this address to your list of favourite addresses.
7. Select **Save**.
8. Select **Route** to begin routing to the destination or select 'X' multiple times to exit and return to the Main Menu.

Creating a route to a favourite destination

1. From the Main Menu, press on **Address Book**.
2. Select **Favourites**.
3. Select the desired destination from the list of favourite destinations.
4. Select **Route**. (You also have the option of editing or deleting this destination.)
5. Select the desired Route Method.

Creating a route to an address in the address book

1. From the Main Menu, press on **Address Book**.
2. Select **List Addresses**
3. Select **List All** or **Search Address Book**.

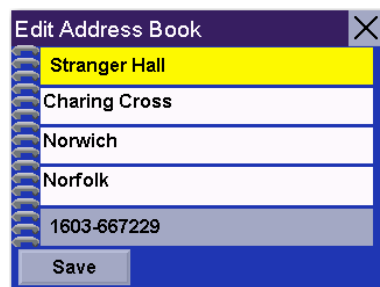
If you perform a search, you will be asked to enter the first few characters in the address name.
4. Select the desired destination from the list of addresses in your address book.
5. Select **Route**. (You also have the option of editing or deleting this address.)
6. Select the desired Route Method.

Editing an address in the address book

1. From the Main Menu, press on **Address Book**.
2. Select **List Addresses**
3. Select **List All** or **Search Address Book**.

If you perform a search, you will be asked to enter the first few characters in the address name.

4. Select the desired address from the list of addresses in your address book.
5. Select **Edit**.
6. Select the top line to change the name or the bottom line to change the address information. Use the keyboard to enter the new text.



You can change the name or add information (phone number, etc.) by pressing on the top or bottom line and use the keyboard to enter new text.

7. Select the Favourite check box if you want to add this address to your favourites list.
8. Select Save to store the changes into your address book.
9. Select "X" in the upper right corner a few times to return to the Main Menu if you have finished.

Deleting an address from the address book

1. From the Main Menu, press on **Address Book**.
2. Select **List Addresses**
3. Select **List All** or **Search Address Book**.

If you perform a search, you will be asked to enter the first few characters in the address name.

4. Select the desired address from the list of addresses in your address book.
5. Select **Delete**.

6. Confirm the deletion by pressing on **Yes**.
7. Select "X" in the upper right corner a few times to return to the Main Menu if you have finished.

Creating a new address

1. From the Main Menu, press on **Address Book**.
2. Select **Create New Entry**
3. Select **Select on Map, Select Address, Points of Interest** or **Town Centre**.

Select Map: The Map screen is displayed. Use your finger or stylus to pan the crosshair cursor around the map. When the crosshair cursor is over the point on the map you want, press on the crosshair cursor.

Select Address: Follow the instructions for selecting an address, either by town, post code or previous towns.

Points of Interest: Follow the instructions previously mentioned in selecting a POI.

Town Centre: Select a town centre by name or proximity to your current position or to any other address.

4. The Edit Address Book screen is displayed. Edit the name or information line if desired. If this address is to be added to your favourites list, press on the Favourites check box.
5. Select **Save**.

Creating a route to a Junction

1. From the Main Menu, press on **Junction**.
2. Select **Search By Town, Search by Postcode** or **Previous Towns**.
3. Input the information as requested depending upon your selection in step 3.

If using Search By Town: Spell the town name and select the town from the list, spell the name of the street and select from the available street list, then enter the address number for the street (it must fall within the street number range displayed at the top of the screen).

If using Search by Postcode: Enter the post code for the address and select the town from the list of available towns. Spell the name of the street and select from the available street list, then enter the address number for the street (it must fall within the street number range displayed at the top of the screen).

If using Previous Towns: Select a town from the list of previously used towns. Spell the name of the street and select from the available street list, then enter the address number for the street (it must fall within the street number range displayed at the top of the screen).


4. Once the town has been selected, enter the name of the first street. When given the list of streets, select the desired one from the list of available streets.
5. Enter the name of the second street. When given the list of streets, select the desired one from the list of available streets.
6. Select the desired Route Method.

Using the Trip Planner


Overview

Normal routes are calculated from your present position to a single destination. It is sometimes beneficial to have a trip that routes to multiple destinations. The Trip Planner allows you to create and save multiple destination trips.

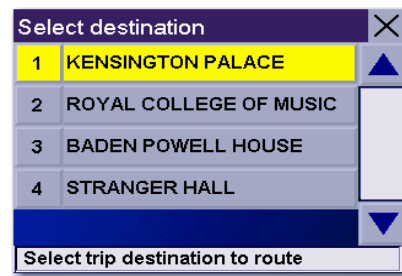
Creating a multiple destination trip

1. From the Main Menu, select  to go to page 2 of the Menu.
2. Select **Trip Planner**.
3. Select **New**.
4. Use the keyboard to enter a name for the trip. Select **OK** when done.
5. Select **Add** from the list of available options.
6. Using the instructions found in *Creating a Route*, enter the first destination in the trip or select it from the map using the Map button.
7. Once the address has been selected, select **Save** on the Add address to Trip screen.
8. The first destination has been added to the trip. To add more destinations, select the destination in the Trip List and select **Add**. Using the instructions found in *Creating a Route*, add the second destination to the list.
9. Continue adding destinations by pressing on the last listed destination and selecting **Add** until you have entered all of the desired destinations for your trip.
10. With the trip complete, select **Save**.

Activating a multiple destination trip


1. From the Main Menu, select  to go to page 2 of the Menu.
2. Select **Trip Planner**.
3. Select **Guide Me**.
4. Select the Trip to be activated from the list of saved trips.

5. A list of the individual destinations is displayed. Select the first destination on the list to activate the trip.
6. Select the routing method to compute the trip.



You can also pick which destination to begin the trip on, skipping over destinations prior to it, by selecting the first destination you want to go to. In this example, selecting 'Kensington Palace' will go to all four destinations in the trip. If you select 'Baden Powell House' the trip would be to 'Baden Powell House' and then to the 'Stranger Hall', skipping 'Kensington Palace' and the 'Royal College of Music'.

Editing a multiple destination trip

1. From the Main Menu, select  to go to page 2 of the Menu.
2. Select **Trip Planner**.
3. Select **Edit**.
4. Select the Trip to be edited from the list of saved trips.
5. Select the destination from the list of available destinations that is to be edited.
6. Select the action required from the list of available actions. You can select **Add**, **Move Up**, **Move Down**, **Delete** or **Cancel**.

Add: Using the standard methods of selecting a destination, a new destination can be selected and added to the trip after the destination selected in step 5.

Move Up: Moves the destination selected up one level in the trip list.


Move Down: Moves the destination selected down one level in the trip list.

Delete: Removes the destination selected from the trip list.


Cancel: Makes no changes and returns to the trip list.

7. When the trip edits are complete, select **Save**.

Deleting a multiple destination trip

1. From the Main Menu, select  to go to page 2 of the Menu.
2. Select **Trip Planner**.
3. Select **Delete, Rename**.
4. Select **Delete**.
5. Select the Trip to be deleted from the list of saved trips.
6. Confirm the deletion by selecting **Yes**.

Renaming a multiple destination trip

1. From the Main Menu, select  to go to page 2 of the Menu.
2. Select **Trip Planner**.
3. Select **Delete, Rename**.
4. Select **Rename**.
5. Select the Trip to be deleted from the list of saved trips.
6. Using the keyboard, enter a new name for the trip. Select **OK** when done.

Magellan RoadMate Enhanced POIs


Overview

Personal POIs can be created using the Magellan RoadMate PC Tools and loaded onto the SD card in your Magellan RoadMate. The Enhanced POI option provides a way of loading these POIs into the receiver and can then be used to create a route or trip.

Speed Camera POIs

The Magellan RoadMate comes with Speed Camera POIs for France, Germany, and the rest of Europe loaded as three enhanced POI files on the SD card. To view the Speed Camera icons on your map you will need to select the appropriate Speed Camera POI file for the country you are travelling in. Follow the instructions for Loading an Enhanced POI file and select the desired speed camera file.

Accessing the Enhanced POI Menu

1. From the Main Menu, select  to get to the second page of the Main Menu.
2. Select the **Enhanced POI** icon.

Loading an Enhanced POI file

1. Install an SD card with POIs you've created using the Magellan PC Toolkit. (Make sure that the POIs you create using Magellan PC Tools have been uploaded to the SD card supplied with your Magellan RoadMate.) POI files for speed traps are already preloaded on the SD Card supplied with your Magellan RoadMate.
2. Access the Enhanced POI menu.
3. Select **Change My POI file**.
4. Select **Select a POI File**.
5. Select the desired POI file from the list of POI files available.

Displaying/Selecting Categories

1. Load a POI file as described in 'Loading an Enhanced POI file'.
2. Select **Display Categories**.
3. Select categories you want displayed or not displayed when selecting a POI to route to. ('X' will be shown.)

Setting Alarms

1. Load a POI file as described in 'Loading an Enhanced POI file'.
2. Select **Set Alarms**.
3. Select those categories you want to be alerted to when approaching. (See Setting Alert Parameters.)

Setting Alert Parameters

1. Load a POI file as described in 'Loading an Enhanced POI file'.
2. Select **Alert Parameters**.
3. Select the category you want to set the parameters for.
4. Select the Detection angle by selecting the detection angle button and entering a new angle [default is 45 degrees]. (This is the area in front of you that will be used to see if one of your POIs is upcoming.)
5. Set the distance for the first and last warning by pressing on their respective buttons and entering the desired distance.
6. Select **Save** when complete.

Creating a Route Using Enhanced POIs

1. When an enhanced POI file has been loaded, access the Enhanced POI menu.
2. Select **Select category**.
3. Select the category that the POI is in.
4. Select **Nearest** (closest to your present position) or **Spell POI Name**.
5. If you selected Nearest, select the destination from the Select POI list.
If you selected Spell POI Name, enter the first few letters for the desired POI and press OK. Select the desired POI from the list.
6. Select **Route**.
7. Select routing method.

Saving a POI to your Address Book from Enhanced POIs

1. When an enhanced POI file has been loaded, access the Enhanced POI menu.
2. Select **Select category**.
3. Select the category that the POI is in.
4. Select **Nearest** (closest to your present position) or **Spell POI Name**.

5. If you selected Nearest, select the destination from the Select POI list.
If you selected Spell POI Name, enter the first few letters for the desired POI and press OK. Select the desired POI from the list.
6. Select **Save**.
7. Edit the POI as needed by pressing on the desired field and entering the information.
8. Add the POI to your favourites list if desired by checking the Favourite checkbox.
9. Select **Save**.
10. You can now route to this POI by selecting **Route** or return to the main menu by selecting **Cancel**.

System Settings

Overview

System settings provides access to a number of global settings for the Magellan RoadMate. The following is a listing of the accessible settings. From the Main Menu screen, select the Application Menu icon and then the System icon.

Volume

A slider bar is displayed that can be selected to raise or lower the volume of alerts. Selecting the speaker icon (above the slider) will mute or unmute the speaker.

Brightness

At the top of the display is a slider bar that can be selected to increase or decrease the brightness of the display.

'On-battery dimming (80%)' should be checked if you want the display dimmed while operating on the internal battery only. This will lengthen the usable battery life between battery charging.

Power

This setting tells the Magellan RoadMate how long it should stay on while there is no noticeable activity. (Noticeable activity would include button presses and the location of the Magellan RoadMate not changing.)

Language

Changes the language used for voice alerts as well as menu items in to one of eleven languages.

Time Zone

Use the '+' and '-' buttons to change the time zone to your local area. Check the Daylight Savings box if you want the time automatically changed for daylight savings.

Unit of Measurement

You can set distances to be displayed as Miles/Feet or Kilometres/Metres.

Page 2

Product Information

Provides detailed information about the software and firmware installed in the Magellan RoadMate. Also shown is the unique serial number for the receiver.

Diagnostics

Provides a way to diagnose the audio, touchscreen or video portions of the Magellan RoadMate.

Additional Items

Battery Life

A battery charge indicator is shown at the bottom of the display. When the Magellan RoadMate is charging, the green bars will sequence from left to right. Remove the power cable and the green lights will display the approximate battery charge.

Contact Us

Press the question mark in the bottom left corner and then “Contact Us” to display a screen with telephone and e-mail information for contacting Magellan about your Magellan RoadMate.

Setting User Options

Overview

Portions of the Magellan RoadMate can be customised to your needs. To access the User Options menu, select **Options** from page 2 of the Main Menu and select the option you want to change.

POI Selection

In POI Selection you can select which POI icons you wish to display on the Map screen

Check the POI category name to select or deselect it. POIs with an “X” will be displayed on the screen. Use ‘Mark All’ or ‘Clear All’ for global selections.

Address Book Options

This option provides a way to quickly clear addresses from your address book.

Clear Addresses clears all of the addresses in your address book.

Clear Favourites clears the addresses marked as favourites from your address book.

Clear Previous clears the previous destinations list.

Map Options

Provides access to customising how the Map screen functions.

3D Map / 2D Map: Changes the display of the map to 3D (forward looking display) or 2D (overhead display).

Heading Up/North Up: Sets the top of the map display to either the direction you are heading or North. Note that ‘North Up’ is only available when the map is set to 2D mode.

Auto TrueView: As you approach a manoeuvre, the map screen changes to a TrueView display and then back to the map display just prior to the manoeuvre. This is the default setting. You can turn this feature off by unchecking ‘Auto TrueView’. TrueView can also be selected to view Split TrueView (default where half the display is the map and the other half an arrow indicating the manoeuvre requirements) or a Single TrueView (only the arrow is displayed).

Map Colour

You can choose from nine different combinations of colours for the map display.

Auto Night Mode: Changes the colours of the display to the one chosen for 'Night Screen' during evening hours. With Auto Night Mode off, only the Day Screen colours are used.

Day Screen/Night Screen: Select these buttons to go to the map colour selection screen. Select the desired colour from the list on the left.

Route Preferences

You can turn automatic re-routing on or off. With automatic re-routing on, the receiver will automatically recalculate the route whenever you leave the planned route.

Automatic Re-Routing: When checked, automatic re-routing is on.

Detour Options

The Magellan RoadMate detects when you are on a route and you are moving slowly or not moving at all on a motorway. It then provides you with the option of detouring around the problem area. It can alert you visually on the map by displaying the detour icon or you can set it not to alert you so you can select detour from the main menu yourself.

5 km/10 km/ 15 km (3 mi/5 mi/10 mi) or Custom: This setting determines the distance that the detour will take you around. (If you are stationary on a motorway and select detour, the Magellan RoadMate will calculate the detour and try to get you back on the original route in the distance specified.)

Enable automatic detour: This defines if the detour icon will be shown on the map when the Magellan RoadMate determines that a detour should be used.

Alert After: This sets the duration when you have stopped or moving slowly on the motorway before a detour icon is displayed.

Example: Settings of '5 km', 'Enable automatic detour' on, and 'Alert After' set to 1 min. You are being routed on a motorway and have been moving at 10 kph due to a traffic jam ahead. After 1 minute of moving slowly, the detour icon will be displayed on the left side of the map indicating that a detour should be used. If you want to activate the detour, press on MENU and select 'Detour'. Select 'Route' and the Magellan RoadMate will calculate a new route, detouring around the next 5 kilometres.

Simulator Mode

This option provides a way to set the Magellan RoadMate into simulation mode. In simulation mode you can create a route and observe the Magellan RoadMate in action as it simulates travelling along the route.

Simulation: Check “Propose simulator mode when calculating a route.” to turn the simulator on. When on, you will be asked each time you create a route if you want it to be simulated.

Menu Colours

The Magellan RoadMate has four colour schemes built in; Default, Pastel, Forest and Desert.

Menu Colours: Select the desired colour theme.

Tone Options

The Magellan RoadMate uses an alert tone to indicate that a manoeuvre is upcoming or has been completed. You can select the type of alert tone to be used.

Tone Options: Select Bell, Chime or Beep.

GPS Options

You can check the status of the GPS signals or set a starting location for the GPS receiver.

GPS Status: Displays high-level information about the satellite and the signal it is transmitting.

Set GPS Position: This is only useful if you have travelled a great distance with the Magellan RoadMate off and it is having problems getting GPS signals. You will be prompted to enter an address for your present location that the Magellan RoadMate can base its satellite search from. (It is extremely unlikely that you will ever need to use this option unless instructed to do so by a service technician if you are experiencing difficulties.) This option can also be used to define a starting point when simulating a route to a destination.

Backup and Restore

Backup and Restore will save (backup) all of your address, trips, and option settings to an SD card installed in the Magellan RoadMate. You can then upload (restore) this information in the future should you lose the information or accidentally clear the addresses.

Magellan RoadMate PC Tools Installation

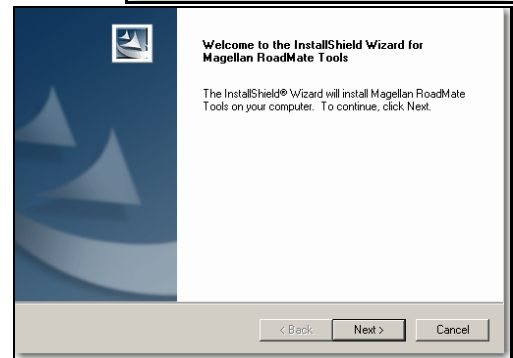
The Magellan RoadMate Tools application enables you to create custom POIs and load them onto your Magellan RoadMate 2200T. It also provides tools for uploading music files and photos onto your SD Card.

Installing the Software

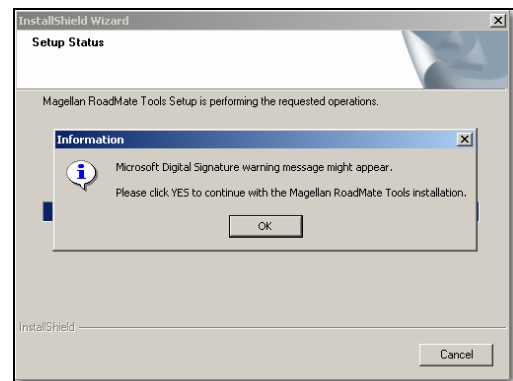
1. Insert the Magellan RoadMate Tools PC Application CD into your PC's CD drive.
2. The setup application will begin automatically. If it doesn't, browse your computer's CD drive and double-click on the setup.exe file.
3. Select a default language for the Application.



4. The Welcome screen will appear to begin the installation process.
5. Choose a destination for the application. Select **Next** to use the default location, or select **Browse** to choose a custom destination.
6. Next, choose a Programme Folder in which to place the application icons.
7. The Magellan RoadMate Tools software will be installed. After it has finished installing, a dialogue box pertaining to Microsoft Digital Signatures may appear, select **OK**.



8. When it has finished, you can allow the installer to launch the application automatically, or deselect to exit without launching the application. Select **Finish**.



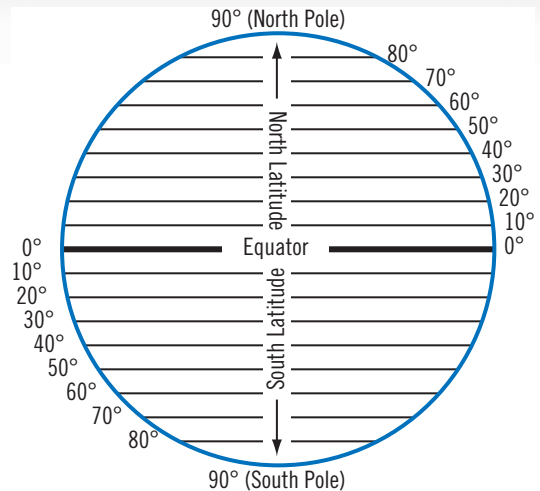
Magellan RoadMate POI Manager

The Magellan RoadMate POI Manager enables you to transfer custom points of interest files from your computer to your Magellan RoadMate 2200T.

Before adding any custom POIs to the Magellan RoadMate 2200T, you should understand how the POI Manager plots POIs.

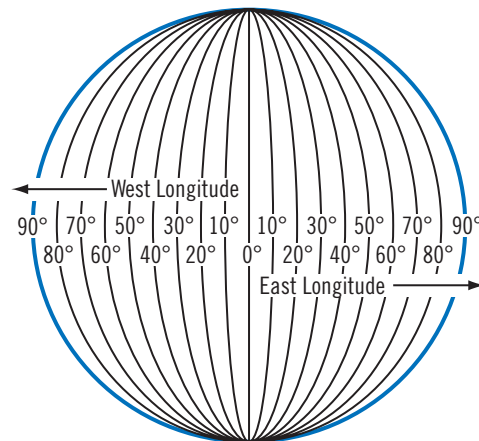
Latitude

Latitude can be expressed by dividing Earth into horizontal segments totaling 180 degrees. Starting at the Equator, or zero degrees Latitude, lines (or Parallels) are drawn in 10-degree increments 90 degrees to the north and 90 degrees to the south. If your location is below the Equator, you are at a South Latitude.



Longitude

Conversely, longitude lines can be expressed by dividing Earth into vertical segments totaling 360 degrees. Starting at the Prime Meridian (which is The Royal Observatory in Greenwich, England), or zero degrees Longitude, lines are drawn in 10-degree increments 180 degrees to the West and 180 degrees to the East. If your location is on the western hemisphere, you are at a West Longitude.

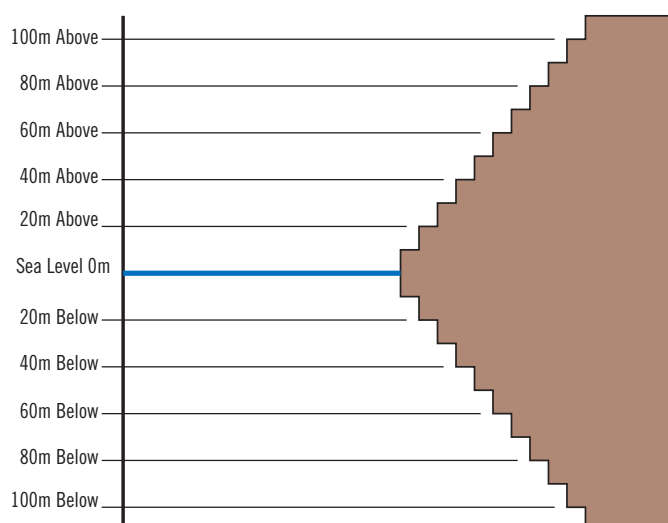


Additionally, to narrow down your location further, each 10-degree segment is divided into 60 smaller segments called minutes and, further still, each minute is divided into 60 segments called seconds.

To express this in coordinates, the city of Paris is located at 48° (degrees) 51' (minutes) and 00 (seconds) North of the Equator, and 2° (degrees) 20' (minutes) and 00 (seconds) East of the Prime Meridian.

Altitude

Each location can also have an Altitude. Altitude is expressed by how far the point is above or below the level of the ocean, or Sea Level.



Turn on your Magellan RoadMate 2200T by pressing and holding the Power button down for approximately 2-3 seconds, or 10 seconds if not in sleep mode. When the Warning screen appears, insert the small end of the USB cable into the USB port on your Magellan RoadMate 2200T, and the large end into an available USB port on your computer.

Launch the Magellan RoadMate Tools application. From the Magellan RoadMate Tools screen, click on **POI**.

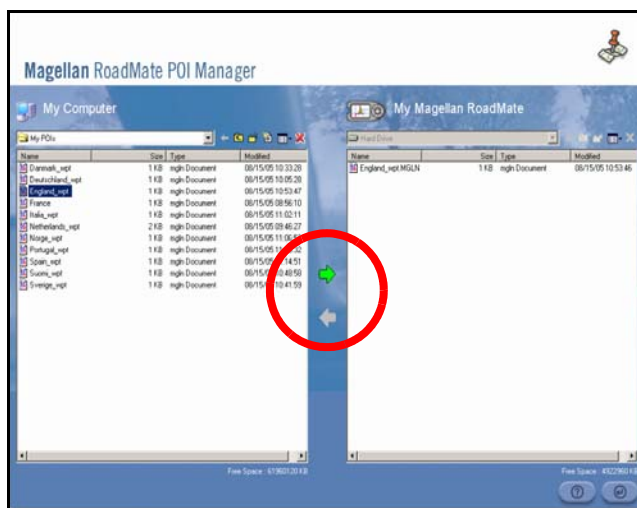


The left side of the window shows the contents of your computer and the right side of the window shows the contents of the Magellan RoadMate 2200T.

Opening a POI File

When you start the POI Manager the contents of your “My POIs” folder will be displayed. This is the default location for storing custom POI files.

Locate the POI files you wish to load. When you have selected a file, the Copy To Unit arrow will turn green. Click on the arrow to copy the file to your Magellan RoadMate 2200T.



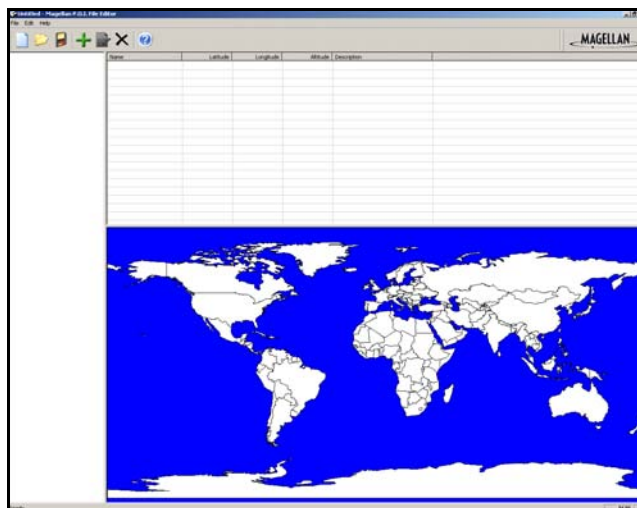
When you have finished copying files, remove the USB cable from the Magellan RoadMate 2200T.


Creating a New POI File

There are two ways to create a POI file. You can either add POIs individually, or you can import a character delimited file containing the information need to plot the POIs. To plot a POI, each item must have a name, longitude, and latitude. Longitude and latitude must be in decimal format.

Adding Individual POIs

Click on the **New POI File** Button to launch the POI Editor.

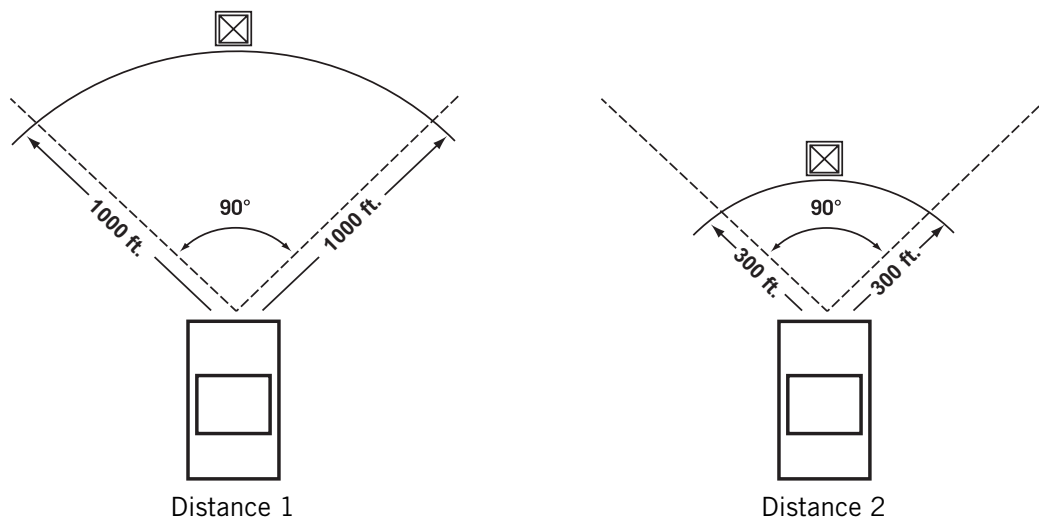


Click on the **Add** button  .

Enter the Name, the Latitude, and the Longitude. The Altitude and Description fields are optional.

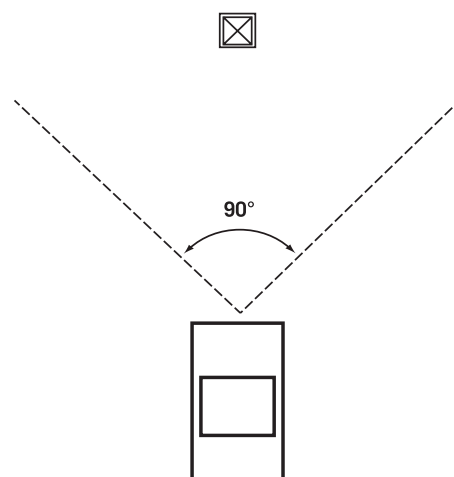
Select the Category field and select **New**. A dialogue box will appear allowing you to create a new POI category. Enter the Name and assign an Image (icon) for the POI. The Description field is optional.

The Alert feature is an audible alarm that lets you know when you are within a certain distance from the POI. You can set an initial reminder (Distance 1), a secondary reminder (Distance 2).



Select your preferred unit of measurement (Metres or Feet).

The Detection angle sets the range of alert in degrees from the POI.




Select Activate alert for this category to enable the alert settings.

When you have finished, select **OK**.

Importing a Data File

The POI Manager software supports ASCII file format (.ASC,.CSV,.TXT); GPS Exchange file format (.GPS,.XML); Magellan Waypoint file format (.WPT,.RTE); and Garmin PCX5 Waypoint file format (.WPT,.RTE).

Click on the **Open** button  .

Select the file you wish to import and click **Open**.

Start by choosing which line in the data file to start importing data. If your data file has a header row, this row will generate an error so you should start at line two or below.

Next, choose how the data is separated and click on **Next**.

You now need to define the data columns. Click on the pull down menu and assign a field name to the appropriate column. Click on **Finish**.

Click on The **Save POI file** button. Assign a name to your file and click on **Save**.

Close the POI File Editor. Select the POI file you have just created and click on the transfer button (right arrow) to upload the file to your Magellan RoadMate 2200T.

Magellan RoadMate Music Manager

The Magellan RoadMate Music Manager enables you to transfer song files in MP3 or WMA format from your computer to the SD memory card installed in your Magellan RoadMate 2200T. The amount of music you can load depends on the size of the memory available on your installed SD card. You can also choose to transfer your music files to a new, optional SD card but the detailed map and speed trap POIs will be unavailable.

Insert the memory card into the memory card slot. Turn on your Magellan RoadMate 2200T by pressing and holding the Power button down for approximately 2-3 seconds if in sleep mode. (Ten seconds if not in sleep mode.) When the Warning screen appears, insert the small end of the USB cable into the USB port on your Magellan RoadMate 2200T and the large end into an available USB port on your computer.

Launch the Magellan RoadMate Tools application. From the Magellan RoadMate Tools screen, click on **Music**.

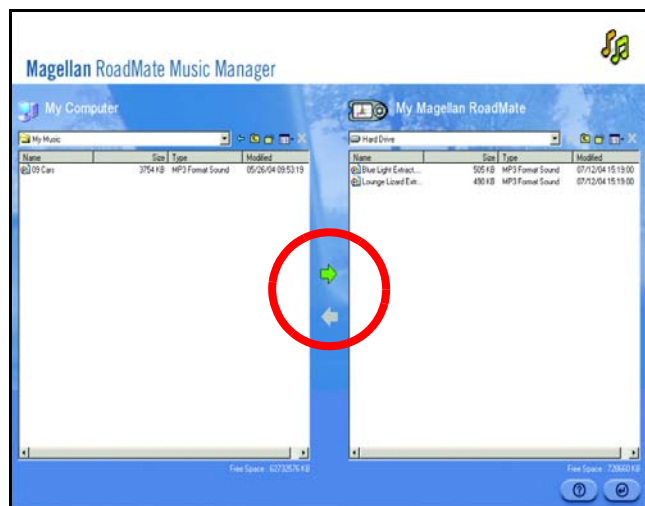
The left side of the window shows the contents of your computer and the right side of the window shows the contents of the memory card installed in your Magellan RoadMate 2200T.



Locate the song files you wish to load. When you have selected a file, the **Transfer** arrow will turn green. Click on the **Transfer** arrow to copy the file(s) to the memory card.

In the same way, if you have loaded song files onto a memory card from another computer, you can copy the files from the memory card to your computer.

When you have finished copying files, remove the USB cable from the Magellan RoadMate 2200T.



Magellan RoadMate Photo Manager

The Magellan RoadMate Photo Manager enables you to transfer image files in multiple formats from your computer to an optional SD memory card installed in your Magellan RoadMate 2200T. The number of images you can load depends on the size of the memory available on your installed SD card. You can also choose to transfer your music files to a new, optional SD card but the detailed map and speed trap POIs will be unavailable.

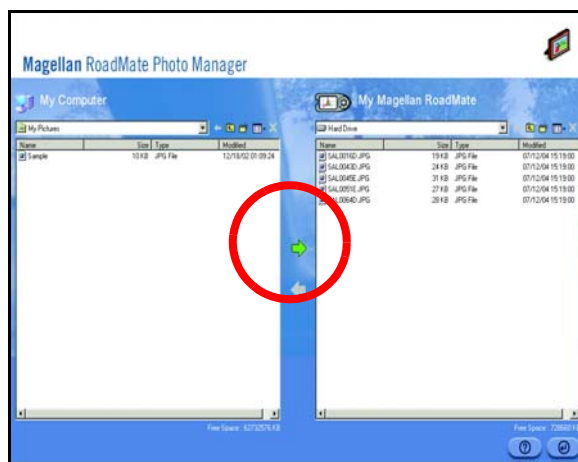
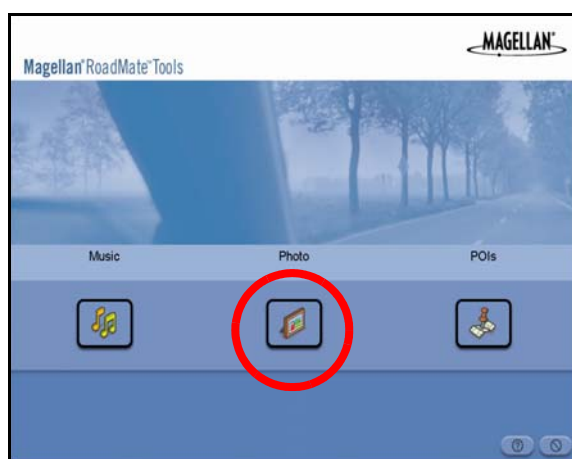
Insert the memory card into the memory card slot. Turn on your Magellan RoadMate 2200T by pressing and holding the Power button down for approximately 2-3 seconds (Ten seconds if the Magellan RoadMate 2200T is not in sleep mode.) When the Warning screen appears, insert the small end of the USB cable into the USB port on your Magellan RoadMate 2200T, and the large end into an available USB port on your computer.

Launch the Magellan RoadMate Tools application. From the Magellan RoadMate Tools screen, click on **Photo**.

The left side of the window shows the contents of your computer and the right side of the window shows the contents of the memory card installed in your Magellan RoadMate 2200T.

Locate the image files you wish to load. When you have selected a file, the **Transfer** arrow will turn green. Click on the **Transfer** arrow to copy the file(s) to the memory card. In the same way, if you have loaded image files onto a memory card from another computer, you can copy the files from the card to your computer.

When you have finished copying files, remove the USB cable from the Magellan RoadMate 2200T.

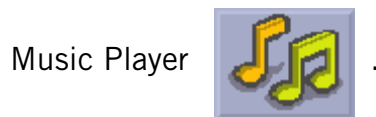


Music Player

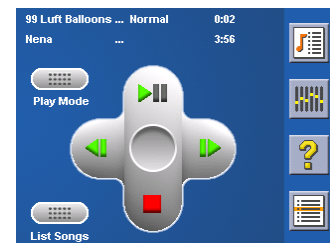
The Magellan RoadMate 2200T Music Player enables you to play music files in MP3, or WMA format, stored on an SD memory card installed in your Magellan RoadMate 2200T. If you have not already done so, you must install the Magellan RoadMate Tools application and transfer files onto the card using the Magellan RoadMate Music Manager.

Note: You must use the Magellan RoadMate PC Toolkit to load music files onto the SD Card.

Select the **Application MENU** button on the Magellan RoadMate 2200T and select the




The Music Player control pad will appear.



Single Song Play

Select **Browse Music**  .

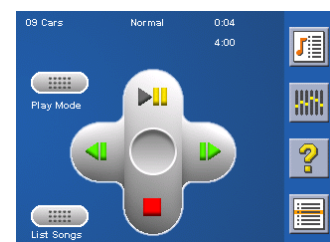
Use the Navigation key or the Down arrow  to select the song file you wish to play and press **OK**.



The song will begin playing automatically.

At the top of the screen the name of the song, the artist (if available), the selected play mode, the elapsed time, and the song duration is displayed .

Press the **Play/Pause** button to suspend song play. To resume song play, press the **Play/Pause** button again.



Press the **Stop** button to stop song play. Once a song has been stopped, pressing the **Play/Pause** button will start the song from the beginning.

Multiple Song Play

Multiple song play enables you to create a “playlist”. A playlist consists of one or more songs in a group that can be played continuously.

Select **Playlist**



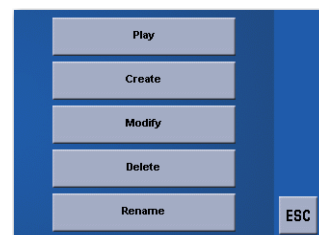
The Playlist menu will appear. To exit the playlist menu, select **ESC**.

Play

To hear a previously created playlist, select **Play**.

Use the Up or Down arrow to select the desired playlist. Select **OK**.

The songs will begin playing automatically in order.



Create

To make a new playlist, select **Create**.

Use the backspace button (<-) to erase the default name; and the keypad to enter a new name for your playlist. When you have finished, select **OK**.

The next screen to appear shows the song files stored on the memory card on the left side, and the playlist on the right side.

Use the arrow buttons on the left side of the screen to highlight the Music folder and then, select **List Files**.

Use the arrow buttons to highlight the song files you wish to add to the playlist. Select **Add to Playlist** (right arrow) to add the highlighted song to the playlist.

Continue adding files to the playlist. When you have finished, select **OK**.

Modify

Modify enables you to add or remove songs from the selected playlist. Select **Modify**.

To remove a song from the playlist, use the arrow keys on the right side of the screen to highlight the desired song and then select **Remove From Playlist** (left arrow).

Use the arrow buttons on the left side of the screen to highlight the song files you wish to add to the playlist. Select **Add to Playlist** (right arrow) to add the highlighted song to the playlist.

Continue adding files to the playlist. When you have finished, select **OK**.

Delete

To remove a playlist, select **Delete**.

Select the playlist you wish to delete and select **OK**.

A dialogue box will appear asking you to confirm your selection. Select **Yes** to delete the playlist.

Rename

If you want to change the name of a playlist, select **Rename**.

Select the playlist you wish to rename and then, select **OK**.

Use the backspace button (<-) to erase the name and the keypad to enter a new name for your playlist. When you have finished, select **OK**.

Play Mode

While in single song play, select **Play Mode** for song play options.

Repeat All - Repeats all the songs in the current playlist starting at the beginning of the order. This feature only works if there are two or more songs in the playlist.

Repeat - repeats the song that is currently playing.

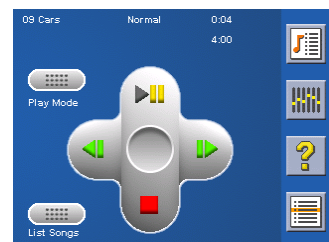
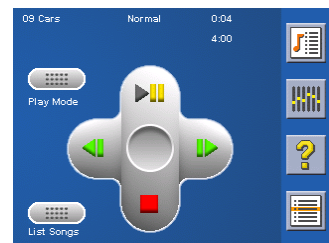
Preview - Plays the first five seconds of each song in the current playlist.

Normal - Plays all songs in the current playlist in order.

Random - Plays the songs in the current playlist in random order.


List Songs

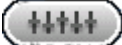
Select **List Songs** to view the current playlist.



Equaliser

The Equaliser provides advanced sound options so you can customise the quality of the playback. The equaliser will only be available for MP3 format sound files. Select an equaliser preset from the following pre-configured options: Default (flat), Jazz, Classical, Rock, Techno, Dance Hall, Live, Full Bass, Full Treble, and Full Bass & Treble. You are not however able to manually set the equaliser.

Select the **Equaliser**  .

Select the equaliser preset by pressing the button at the top of the screen  .

When you are satisfied with your selection, select **OK**. To exit without setting the equaliser, select **ESC**.

Help


Select **Help**  for descriptions of the Music Player buttons.

Photo Viewer

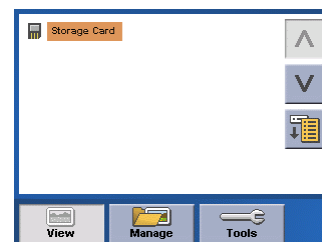
The Magellan RoadMate Photo Viewer enables you to view image files in JPG and BMP format, stored on an SD memory card installed in your Magellan RoadMate 2200T. If you have not already done so, you must install the Magellan RoadMate Tools application and transfer files onto the card using the Magellan RoadMate Photo Manager.

Select the **Application MENU** button on the Magellan RoadMate 2200T.

Select the **Photo Viewer**



The Photo Viewer screen will appear. The Photo viewer will show the contents of the SD or MMC card installed in your Magellan RoadMate 2200T.




View Single Photo

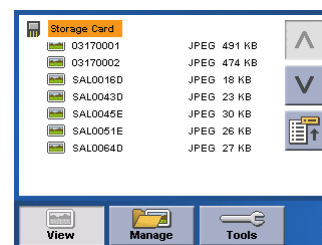
The next screen to appear shows the file structure of the memory card.

Select **List Files**



Use the Navigation key or the Down arrow  to highlight the photo you wish to view and select **View**.

While viewing the image, double clicking on the image (i.e. pressing twice on the screen) will show the image in full screen. You can then cycle through the images by pressing on the left or right arrow.



Previous Image (left arrow)



Press the right arrow button to view the previous image in the folder. This button is greyed out (not functional) when viewing the first image in the folder.

Zoom



Press the Zoom button to reduce or enlarge the current photo. The top of the zoom menu shows the current zoom level. Select another zoom level from the list of presets. Select Best Fit to adjust the zoom to fit within the display boundaries; select Actual Size to display the image at 100%; select 25% to 150% to reduce or enlarge the image to the preset level.

Slideshow



Press the Slideshow button to browse through all the photos in the Pictures folder automatically.

Pan



If you enlarge an image beyond the screen boundaries, press the Pan button to enable image scrolling. While enabled, you can drag the image in any direction to view other areas of the image. Press the Pan button again to disable Pan mode.

Rotate Image



Press the Rotate Image button to rotate the image 90° counterclockwise, 90° clockwise, or 180°.

Next Image (right arrow)



Press the right arrow button to view the next image in the folder. This button is greyed out (not functional) when viewing the last image in the folder.

ESC



Press **ESC** to return to the folder list.

Manage Photos

List View

Press List view to show the files in a hierarchical list view.

Thumbnail

Press Thumbnail to show the files as thumbnails.

Rename

To change the name of the selected file or folder, press **Rename**.

Use the backspace button (<-) to erase the name; and the keypad to enter a new name for your file. When you have finished, select **OK**.

Properties

To view information on the selected file or folder, press **Properties**. A thumbnail of the image will be displayed along with the width and height in pixels, the size, and the format (image type). When viewing the properties for folders, width, height, and format are not shown. Size shown is the combined size of all images in the selected folder.

When you are finished viewing the properties, select **OK**.

Tools

Preferences

General - In General preferences, you can set the default file view to either thumbnail or file list view.

Slideshow - The slideshow preferences enable you to set the view properties, the sequence of photos, the transition between photos, and the duration between photos.

Background - The background preferences enable you to set the background colour behind the photo being viewed.

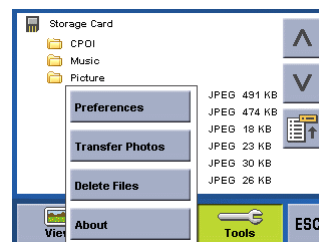
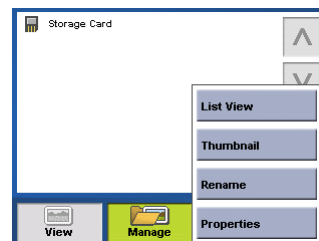
Delete Files

Use the arrow keys to select the file or folder you wish to delete. Press the **Delete** button (trash can).

A dialogue box will appear asking you to confirm your selection. Select **Yes** to delete the file.

About

This option will display the current version of the Photo Viewer software.



Information

Registration

Please ensure that you register your Magellan RoadMate at **www.magellanGPS.com**. By registering, you will be informed of the latest product updates.

Technical Support

Visit the support section of our website at **www.magellanGPS.com** for technical information about your Magellan RoadMate and Frequently Asked Questions.